



SEPTEMBER 2023

Newsletter

ISSUE

11 | 1 2 7
I M E L A

III | 1 2 7
I M E L A

We encourage you to come for a site visit. We also request you to make the scheduled instalment payments for September and October as per the circulated customer statements.

Customers will get a 3% discount on their next installment if paid 30 days before due date.

12.0 MONTHLY PROGRESS REPORT:

IRON MONGERY & DOOR FRAMES	TARGET	ACHIEVED	COMMENT
Groundfloor	May-23	100%	Completed
1st floor	June - 23	100%	Completed
2nd floor	July - 23	100%	Completed
3rd Floor	Aug-23	100%	Completed
4th Floor	Sep-23	100%	Completed

13.0 MONTHLY PROGRESS REPORT:

HOUSES + CORRIDOR PLASTER	TARGET	ACHIEVED	COMMENT
Groundfloor	Jun-23	100%	Completed
1st floor	July - 23	100%	Completed
2nd floor	Aug - 23	100%	Completed
3rd Floor	Sept-23	50%	Ongoing
4th Floor	Oct-23	0%	Scheduled

14.0 MONTHLY PROGRESS REPORT:

HOUSES + CORRIDOR PLASTER	TARGET	ACHIEVED	COMMENT
Groundfloor	July-23	100%	Completed
1st floor	Aug - 23	100%	Completed
2nd floor	Sep - 23	100%	Completed
3rd Floor	Oct-23	0%	Scheduled
4th Floor	Nov-23	0%	Scheduled

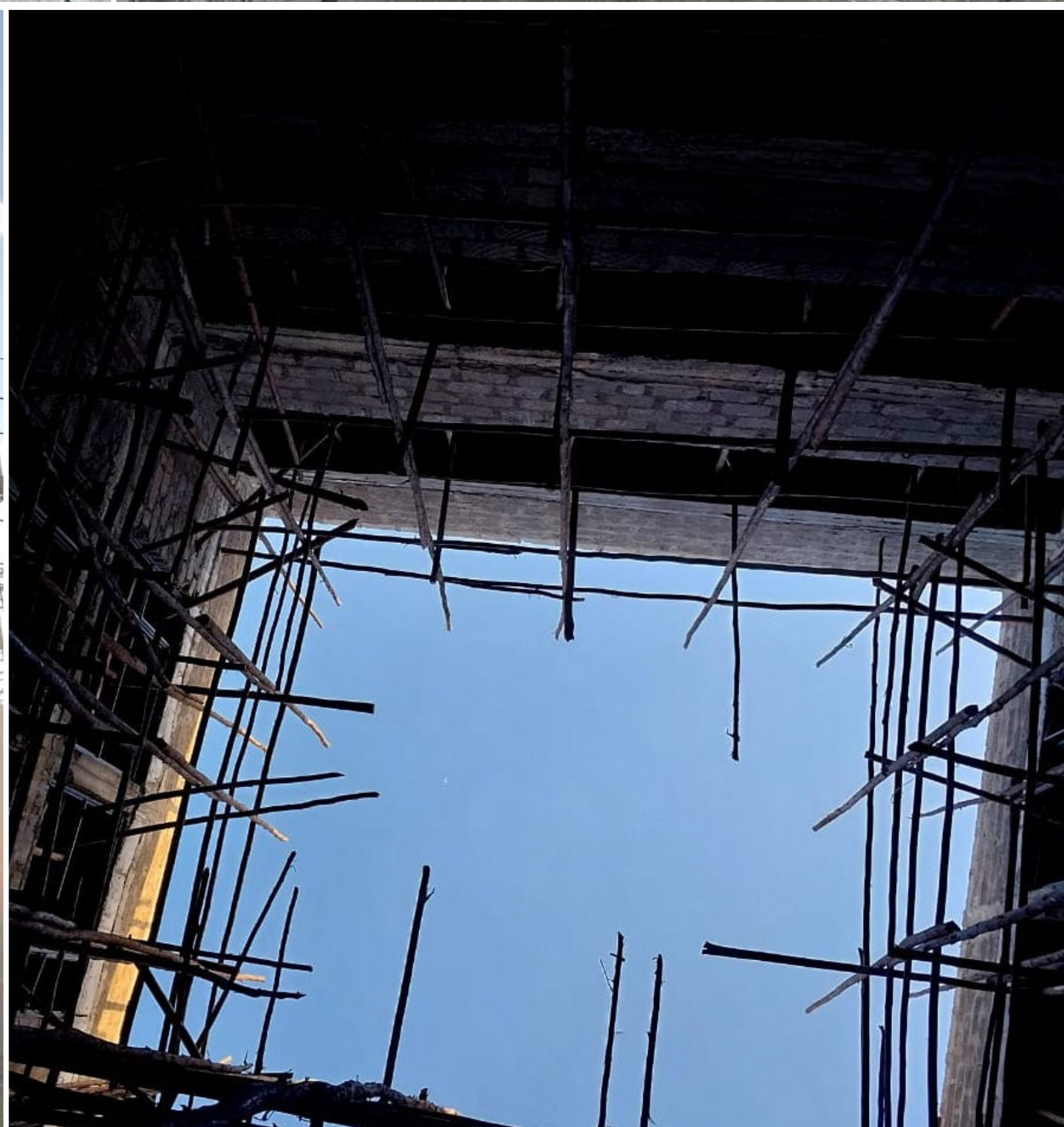
15.0 MONTHLY PROGRESS REPORT:

EXTERNAL PLASTER - FAÇADE	TARGET	ACHIEVED	COMMENT
Side and Front Elevations	Sep-23	100%	Completed
Back Elevations	Oct - 23	50%	Ongoing
EXTERNAL PAINT WORK - FAÇADE	TARGET	ACHIEVED	COMMENT
Side, Front & Back Elevations	Oct-23	0%	Scheduled



II | 1 2 7
I M E L A

SEPTEMBER 2023- PROGRESS



Browncap now has a customer portal that allows customers to access their **customer statements** digitally. All customer credentials have been sent, reach out if your require assistance.



Browncap Portal

1

Login to continue

Email

Password

☐ Remember me

[Forgot Password?](#)

LOGIN

BROWNCAP

allanmutuma@gmail.com


Dashboard

Client Management

Payments

Portal Admin

Dashboard



127 Imela Place

Value: KES 2,648,000

Paid: KES 1,200,000

Balance: KES 1,448,000

UNRECONCILED AMOUNTS

--	--	--	--	--

127 IMELA

LOCATION

OPP. KENYATTA UNIVERSITY REFERRAL HOSPITAL
EASTERN BYPASS, NAIROBI

CONTACTS

 011 520 5332

 sales@imelaplace.co.ke

 www.127imelaplace.co.ke

 @127IMELA

 127 IMELA PLACE

 127_IMELAPLACE